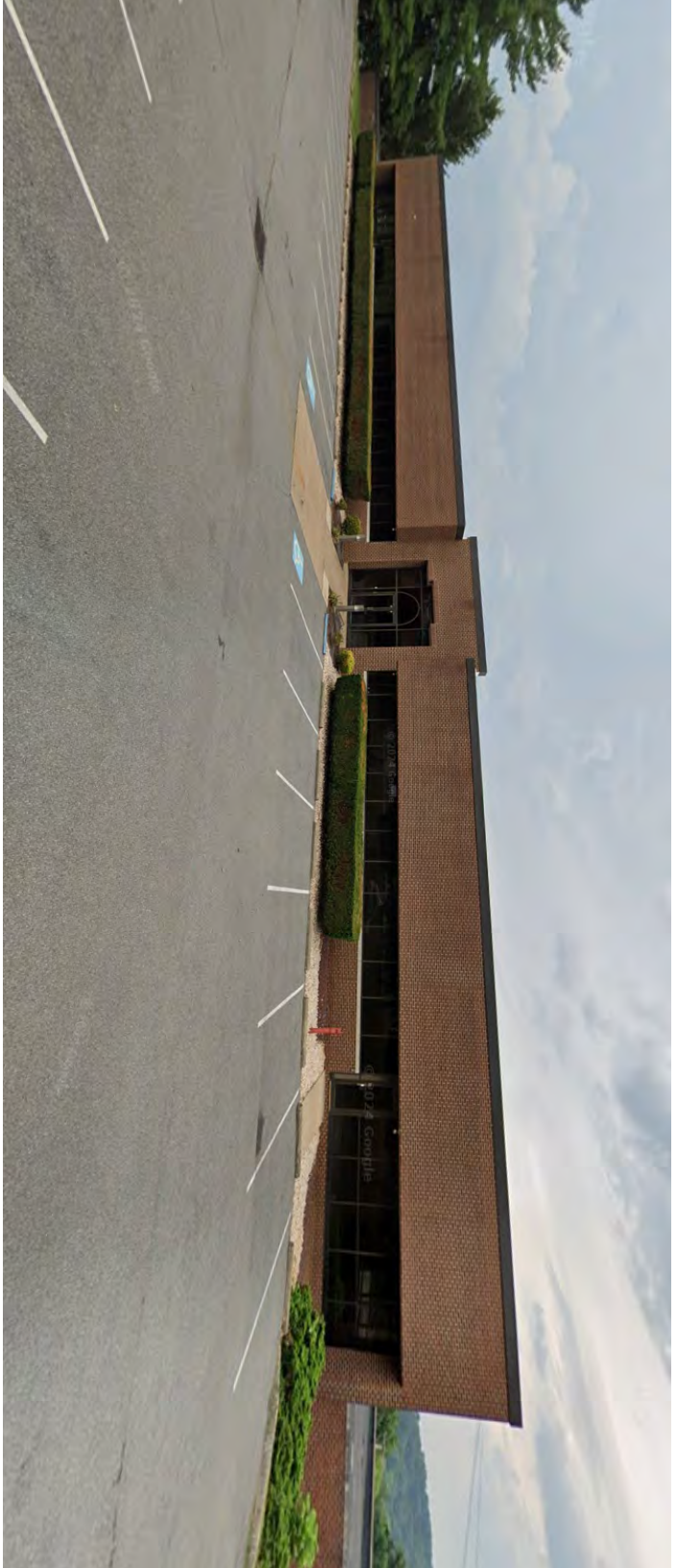


FOR LEASE OFFICE - FIRST FLOOR



**MARKWARD
GROUP**
COMMERCIAL, INDUSTRIAL & RETAIL REAL ESTATE

1991 Northampton Street | Easton, PA 18042
25,000 SF Office Building | Renovated Space



Key Features

- Ample Parking
- Excellent location
- **Commercial elevator**
- Additional warehouse / storage space available
- Public Utilities

Location

Northampton County: Located on the main east-west artery from downtown Easton to all three (3) Easton exits, (25th Street, 13th Street), Route 22 only minutes away.

Zoning

BI - Business Industrial

Lease Rate: Call For Pricing

**For more information,
please contact**

Mike Capobianco, SIOR
610.295.6607
mcapobianco@MarkwardGroup.com

Del Markward, SIOR
610.295.6603
dmarkward@MarkwardGroup.com



SIOR

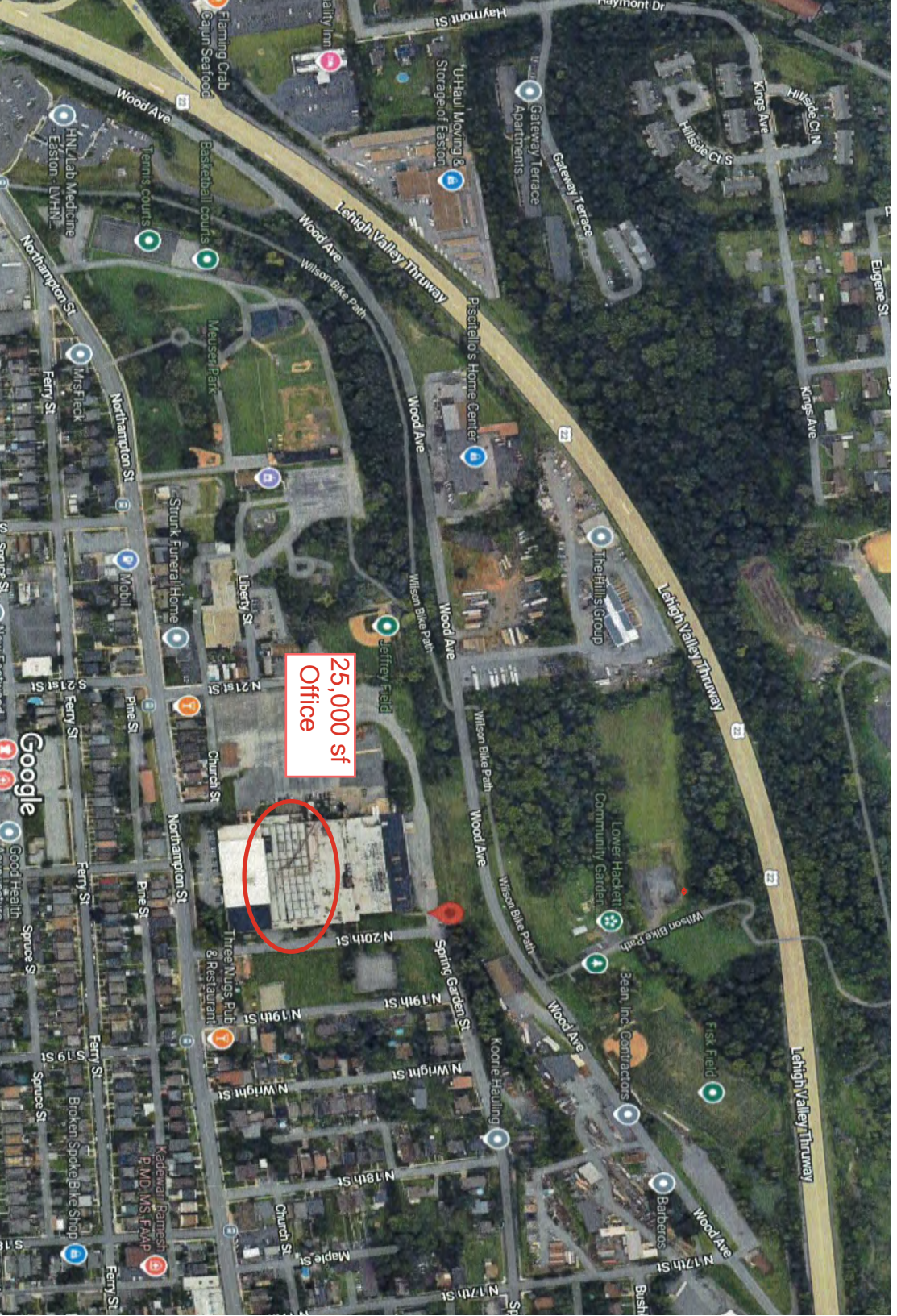
Markward Group
5925 Tilghman Street, Suite 1400
Allentown, PA 18104
p: 610.295.6600
MarkwardGroup.com

The foregoing information was furnished to us by sources which we deem to be reliable, but no warranty or representation is made as to the accuracy thereof. Subject to correction of errors, omissions, change of price, prior sale or withdrawal from market without notice.

FOR LEASE OFFICE - FIRST FLOOR



**MARKWARD
GROUP**
COMMERCIAL, INDUSTRIAL & RETAIL REAL ESTATE



The foregoing information was furnished to us by sources which we deem to be reliable, but no warranty or representation is made as to the accuracy thereof. Subject to correction of errors, omissions, change of price, prior sale or withdrawal from market without notice.