



**MARKWARD  
GROUP**

**FOR LEASE**

# 25,000 SF - 1<sup>ST</sup> FLOOR OFFICE BUILDING



**1991 Northampton St  
Easton, PA 18042**

## Features

- Ample parking / 50+ parking spaces
- Large to medium office area / Multi-Spaces
- Excellent location
- Commercial elevator
- Additional warehouse / Storage space available
- Public utilities

## Location

- Northampton County
- On the main East-West artery from downtown Easton to all three (3) Easton exits
- Rt 22 only minutes away

## Zoning

- BI - Business Industrial

## Lease Rate

- Call for pricing

## CONTACT

**Mike Capobianco, SIOR**

Associate Broker

[mcapobianco@markwardgroup.com](mailto:mcapobianco@markwardgroup.com)

610.295.6600

**Del Markward, SIOR**

President / Founder

[dmarkward@markwardgroup.com](mailto:dmarkward@markwardgroup.com)

610.306.6600



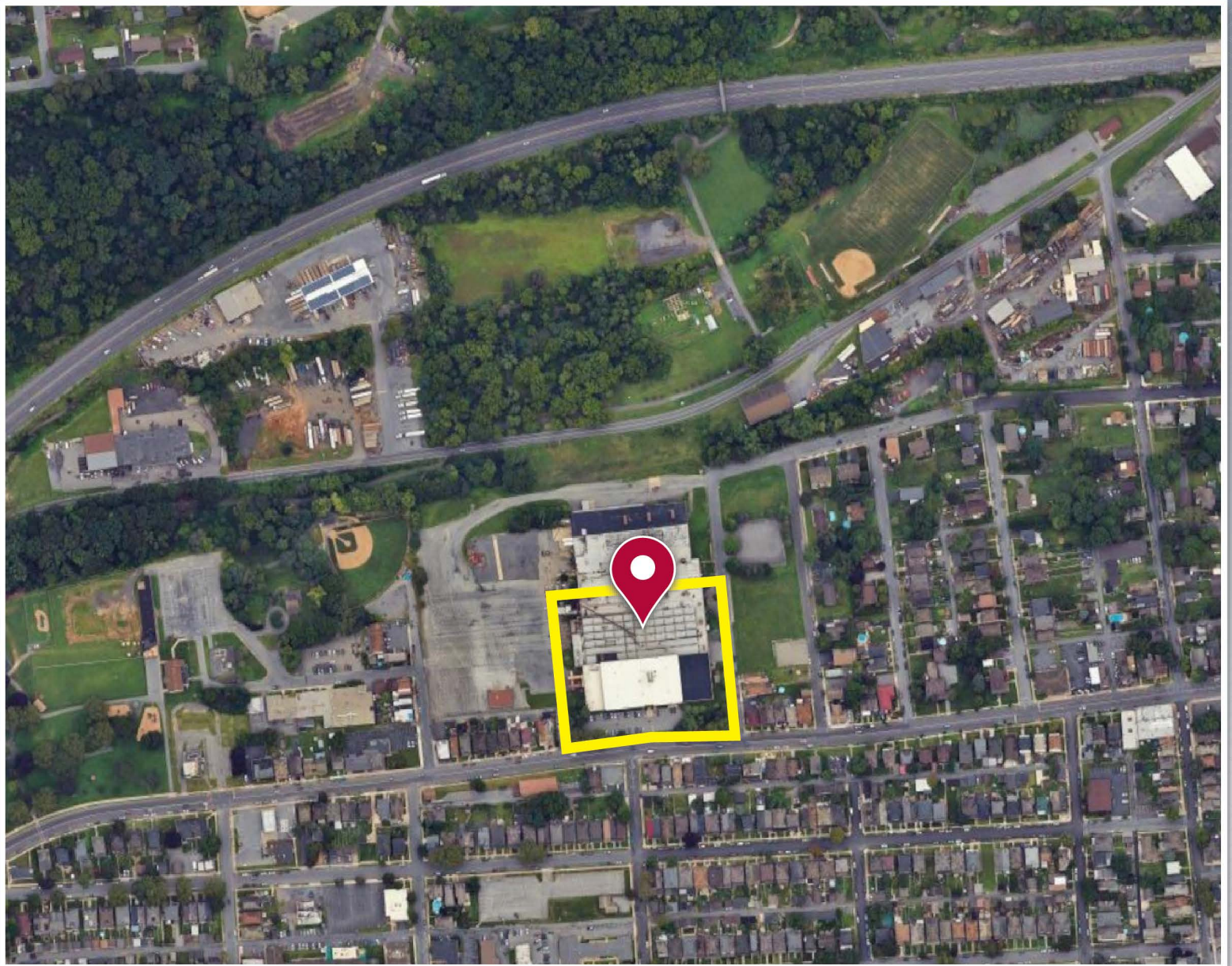
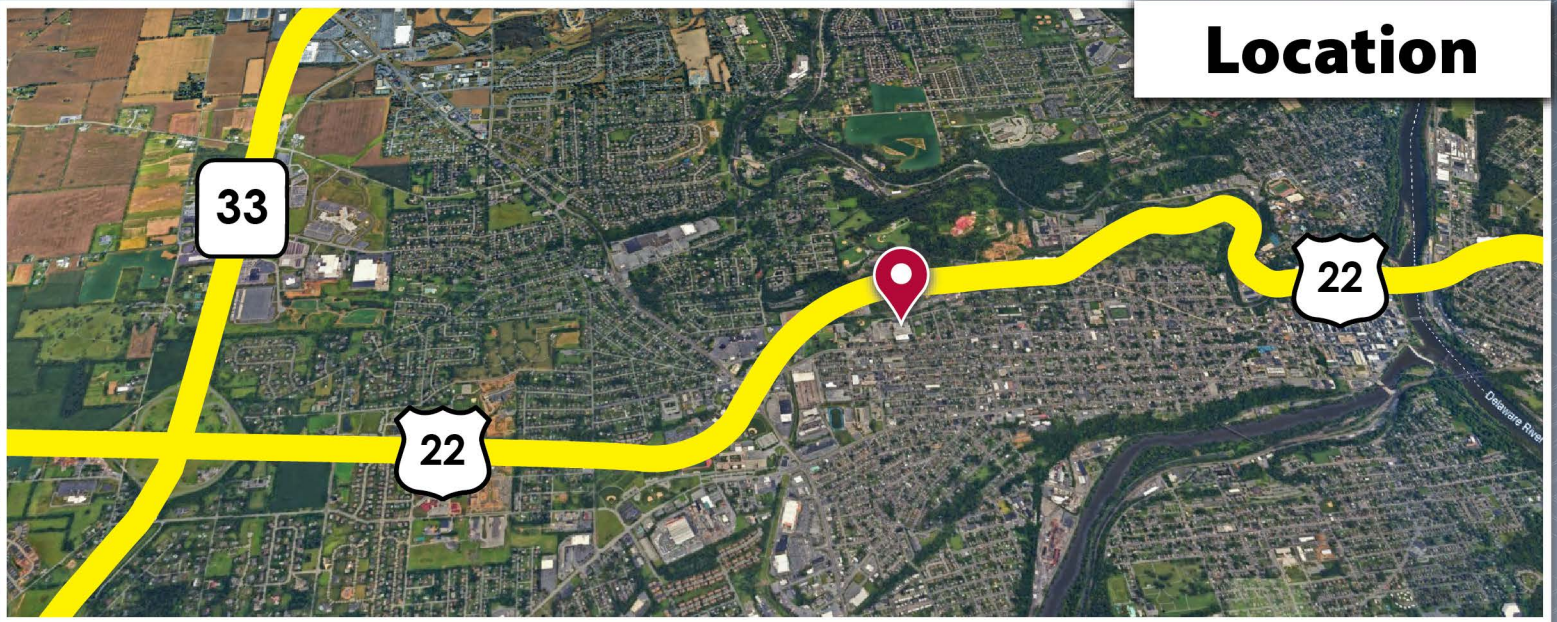
**SIOR**



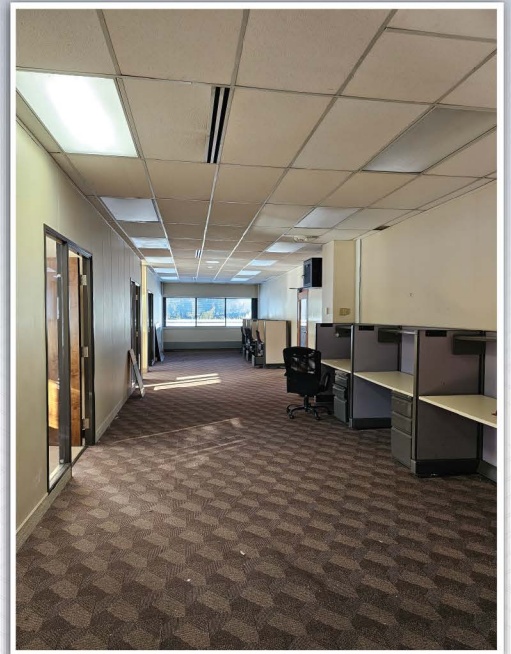
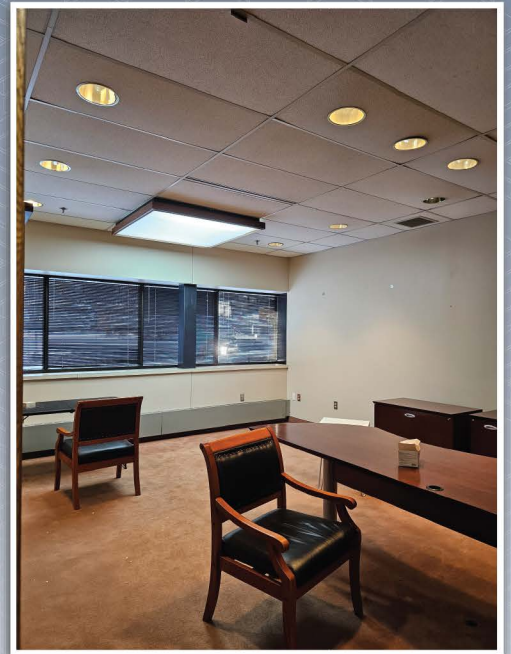
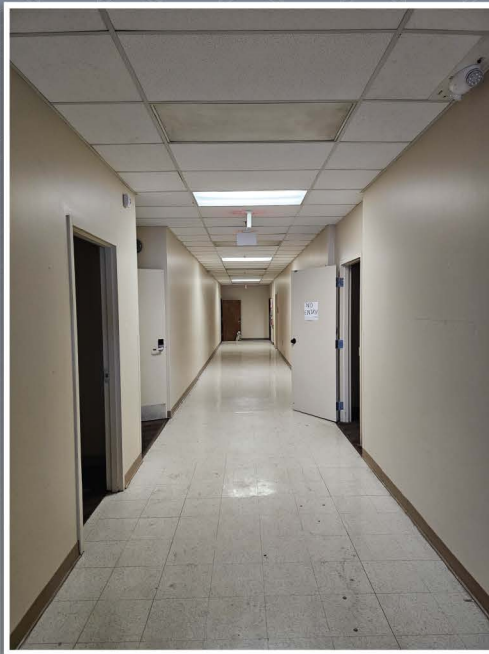
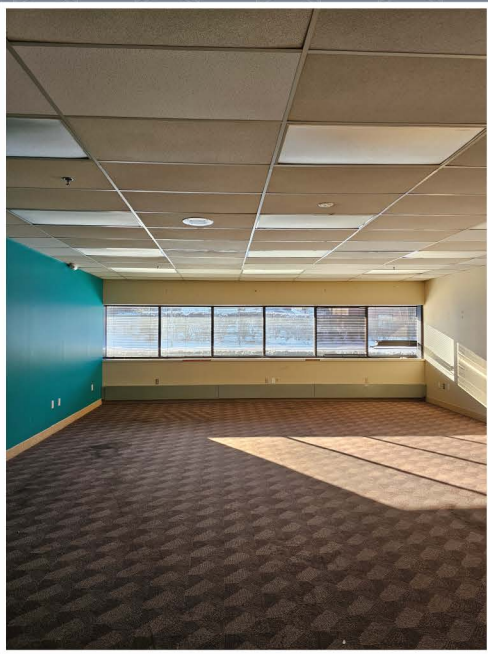
**MARKWARD GROUP**

5925 Tilghman Street, Suite 1400 | Allentown, PA 18104 | 610.295.6600

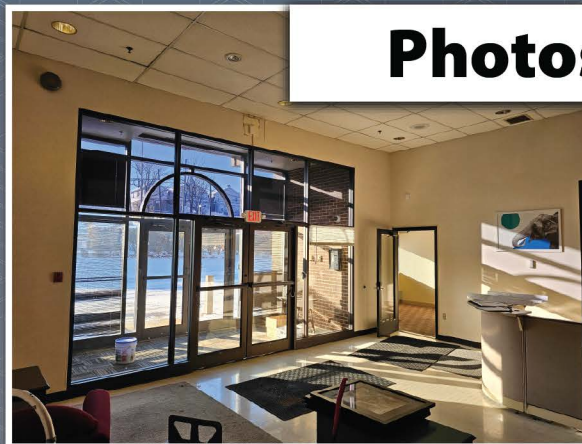
# Location



# Photos



# Photos



The foregoing information was furnished to us by sources which we deem to be reliable, but no warranty or representation is made as to the accuracy thereof. Subject to correction of errors, omissions, change of price, prior sale, or withdrawal from market without notice.



**MARKWARD GROUP**