

FOR LEASE | COMMERCIAL
±9,300 SF | Warehouse



260 Shady Lane, Suite 3
Manchester, PA 17345



Highlights

- 9,300 SqFt of warehouse space
- Upper and lower office space
- Warehouse clear height: 16'
- Two (2) dock doors with seals and levelers
- One (1) 16' W x 14' H drive-in door w/ ability to add more
- ±0.5 AC of private fenced outdoor storage
- Utilities:
 - HVAC - Warehouse - two (2) mounted gas heaters
 - HVAC - Office - two (2) wall-unit AC
 - Lighting - Flourescent lights & skylights

Location

- 1.5 miles from North & South-bound I-83

Zoning

- I - Industrial District

Lease Rate

- Contact for details

**For more information,
please contact:**

Dutch Markward

610.888.3804

dutch@markwardgroup.com

Ann Kline

610.295.6602

akline@markwardgroup.com

Del Markward, SIOR

610.295.6603

dmarkward@markwardgroup.com



Markward Group

5925 Tilghman Street, Suite 1400

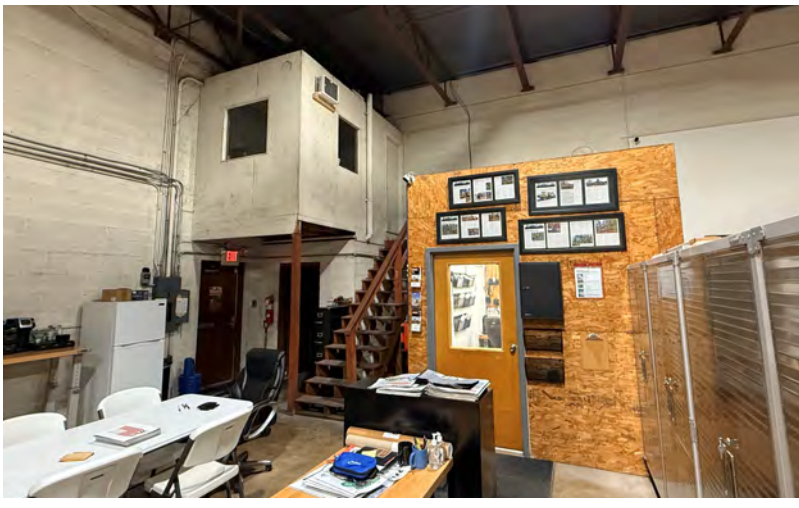
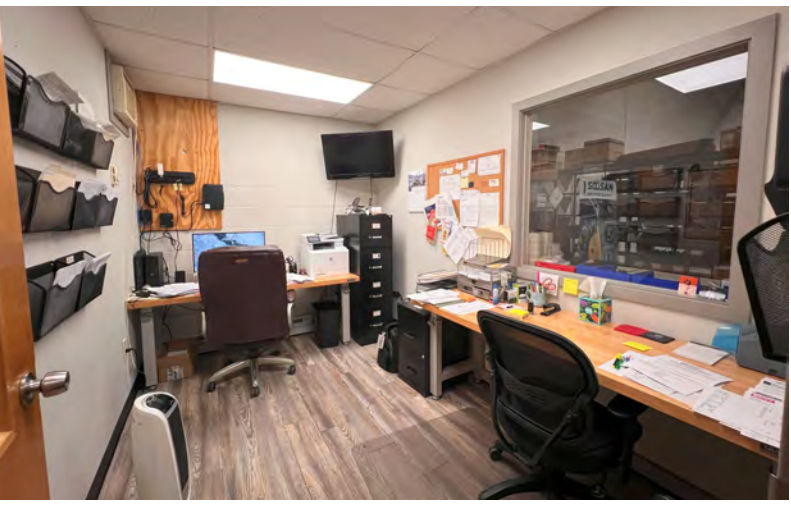
Allentown, PA 18104

p: 610.295.6600

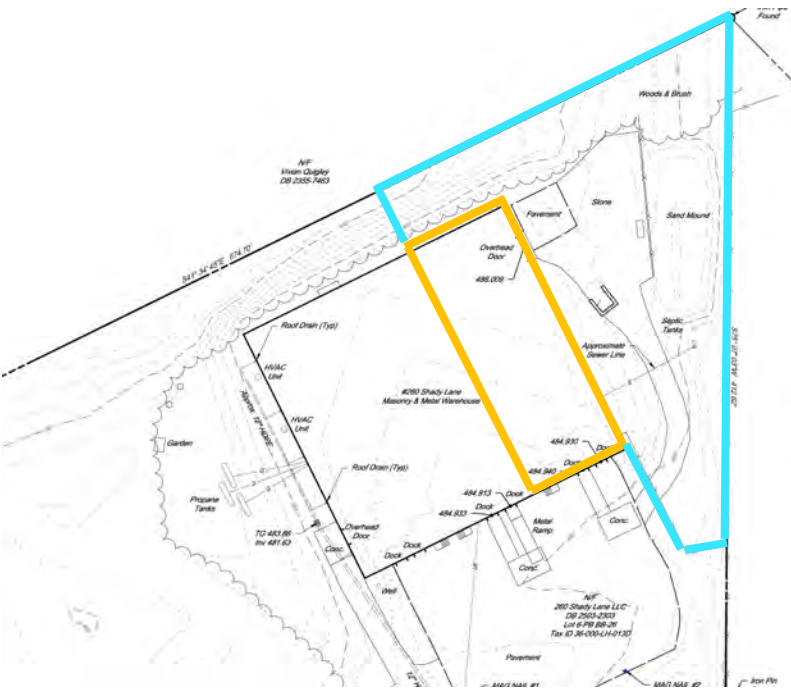
MarkwardGroup.com

The foregoing information was furnished to us by sources which we deem to be reliable, but no warranty or representation is made as to the accuracy thereof. Subject to correction of errors, omissions, change of price, prior sale or withdrawal from market without notice.

260 Shady Lane, Suite 3 Manchester, PA 17345



260 Shady Lane, Suite 3 Manchester, PA 17345



The foregoing information was furnished to us by sources which we deem to be reliable, but no warranty or representation is made as to the accuracy thereof. Subject to correction of errors, omissions, change of price, prior sale or withdrawal from market without notice.