

## 4750 Tilghman Street Allentown, PA 18104



### New Retail Space - Up to 12,000 SF Divisible

#### Key Features

- New Construction
- Retail Space
- Divisible - To 1,700 SF
- Ample Parking
- Private Entrances
- Exterior Signage
- Marquee Signage
- Available First Quarter of 2024

#### Location

Lehigh County: Close To Route 309, Route 22 And the Pennsylvania Turnpike, Lehigh Valley Exit

#### Zoning

Highway Commercial

#### Lease Rate

Call For Rate - NNN

**For more information,  
please contact**

**Ann Kline**  
610.295.6602  
akline@MarkwardGroup.com

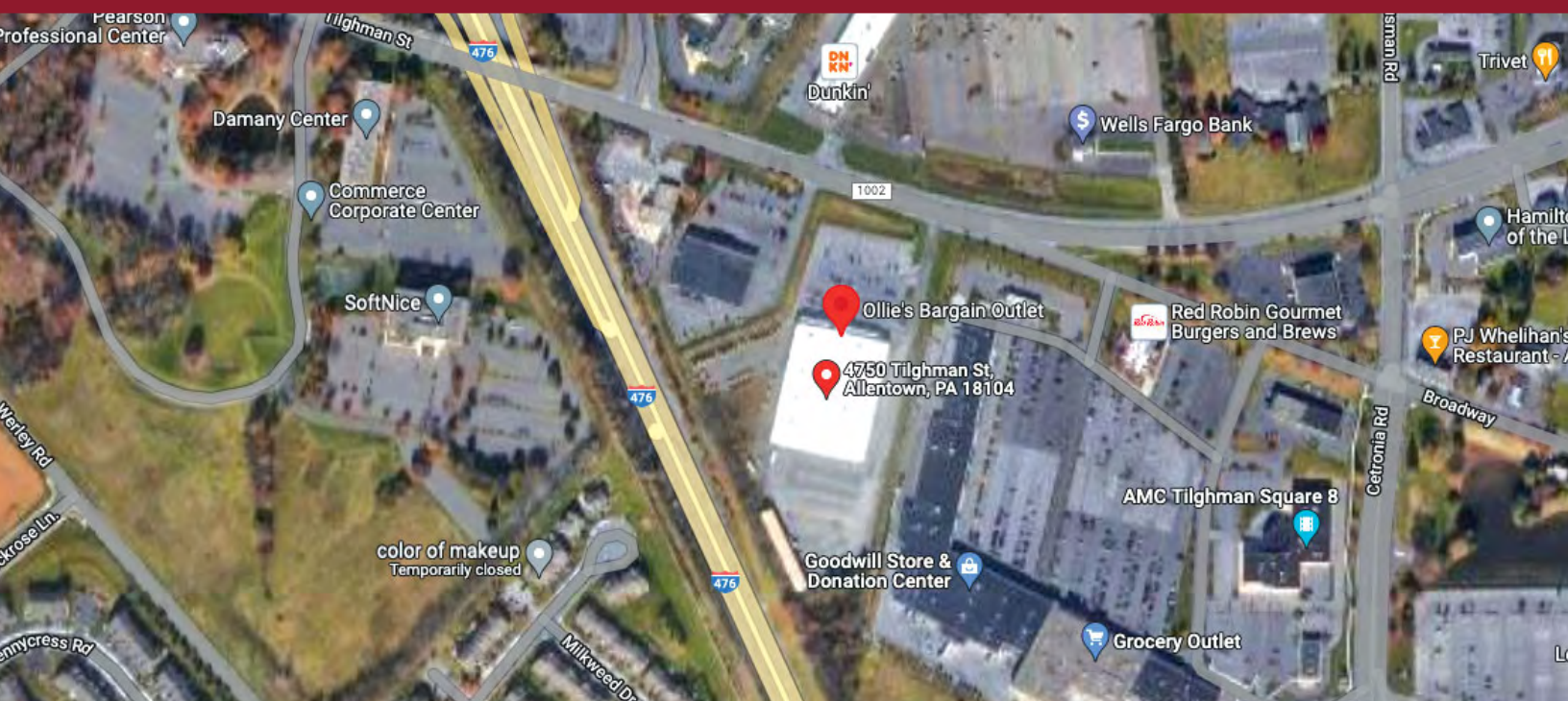
**Chip Miers**  
610.295.6604  
cmiers@markwardgroup.com

**Del Markward, SIOR**  
dmarkward@MarkwardGroup.com

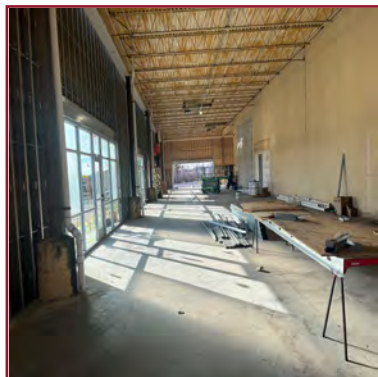
**Markward Group**  
5925 Tilghman Street, Suite 900  
Allentown, PA 18104  
p: 610.295.6600 | f: 610.295.6601  
[MarkwardGroup.com](http://MarkwardGroup.com)



## 4750 Tilghman Street Allentown, PA 18104



### New Retail Space - Up to 12,000 SF Divisible



**For more information,  
please contact**

**Ann Kline**  
610.295.6602  
akline@MarkwardGroup.com

**Chip Miers**  
610.295.6604  
cmiers@markwardgroup.com

**Del Markward, SIOR**  
dmarkward@MarkwardGroup.com

**Markward Group**  
5925 Tilghman Street, Suite 900  
Allentown, PA 18104  
p: 610.295.6600 | f: 610.295.6601  
[MarkwardGroup.com](http://MarkwardGroup.com)

