



## Multi-Building Auto/Truck Repair Facility

### Key Features

- 4,320 sq ft drive-through service building
- Two (2) 12' x 12' drive-in doors
- Office/reception area
- 40 car / vehicle parking spaces - .48 acres
- Three (3) truck repair bays
- One (1) former paint booth /repair bay

### Location

Lehigh County: Hanover Township, less than 1/4 mile south of Airport Road, within 1 mile of Route 22 access points and adjacent to the 300 acre planned business park, to be constructed by Majestic Realty.

### Zoning

Planned Commercial

### Lease Rate

\$16,000 per month  
plus utilities

### For more information, please contact

**Chip Miers**

610.295.6611

cmiers@MarkwardGroup.com

**Ann Kline**

610.295.6602

akline@MarkwardGroup.com

**Del Markward, SIOR**

610.295.6603

dmarkward@MarkwardGroup.com

**Markward Group**

5925 Tilghman Street, Suite 900

Allentown, PA 18104

p: 610.295.6600

f: 610.295.6601

MarkwardGroup.com



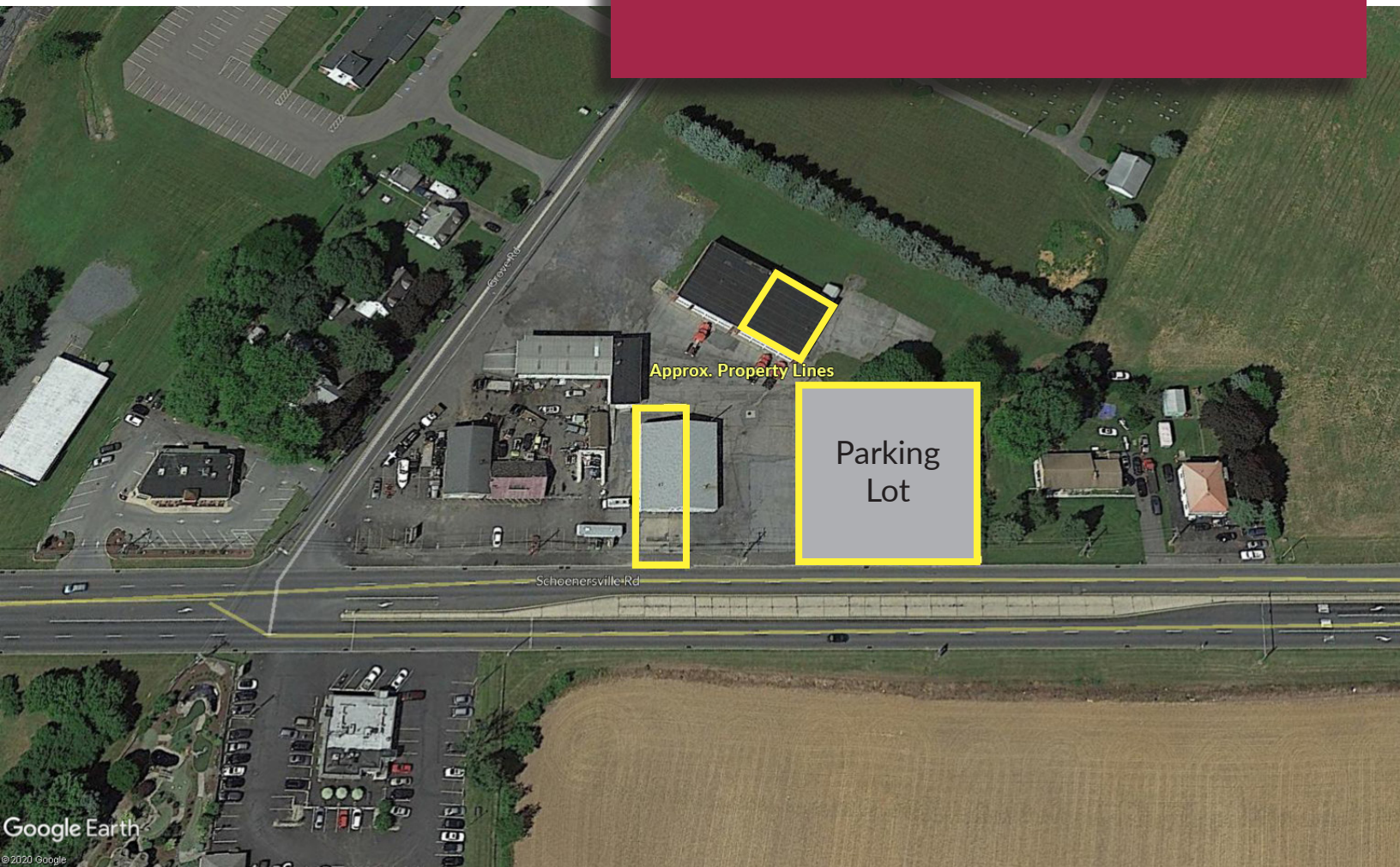


**MARKWARD  
GROUP**

Commercial, Industrial & Retail Real Estate

**FOR LEASE | RETAIL**

2340 Schoenersville Road | Allentown, PA 18109



## Multi-Building Auto/Truck Repair Facility

### For more information, please contact

**Chip Miers**

610.295.6611

cmiers@MarkwardGroup.com

**Ann Kline**

610.295.6602

akline@MarkwardGroup.com

**Del Markward, SIOR**

610.295.6603

dmarkward@MarkwardGroup.com

### **Markward Group**

5925 Tilghman Street, Suite 900

Allentown, PA 18104

p: 610.295.6600

f: 610.295.6601

MarkwardGroup.com



The foregoing information was furnished to us by sources which we deem to be reliable, but no warranty or representation is made as to the accuracy thereof. Subject to correction of errors, omissions, change of price, prior sale or withdrawal from market without notice.



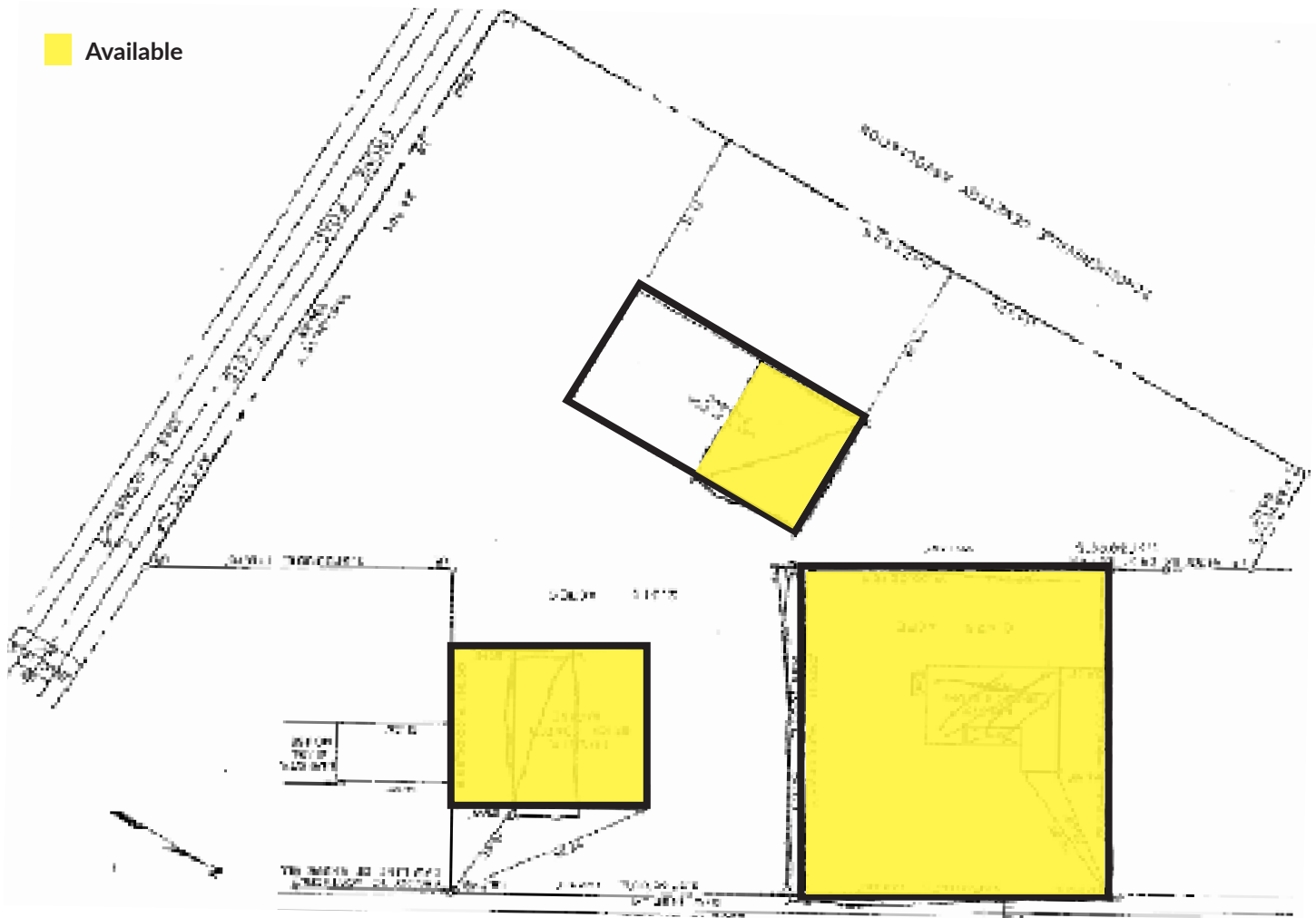
**MARKWARD  
GROUP**

Commercial, Industrial & Retail Real Estate

**FOR LEASE | RETAIL**

2340 Schoenersville Road | Allentown, PA 18109

## Original Site Plan



## Multi-Building Auto/Truck Repair Facility

### For more information, please contact

**Chip Miers**

610.295.6611

cmiers@MarkwardGroup.com

**Ann Kline**

610.295.6602

akline@MarkwardGroup.com

**Del Markward, SIOR**

610.295.6603

dmarkward@MarkwardGroup.com

**Markward Group**

5925 Tilghman Street, Suite 900

Allentown, PA 18104

p: 610.295.6600

f: 610.295.6601

MarkwardGroup.com



**SIOR**

The foregoing information was furnished to us by sources which we deem to be reliable, but no warranty or representation is made as to the accuracy thereof. Subject to correction of errors, omissions, change of price, prior sale or withdrawal from market without notice.