



# MARKWARD GROUP

Commercial, Industrial & Retail Real Estate

FOR LEASE | INDUSTRIAL

7661 - 7671 BETH BATH PIKE | BATH, PA



## Primary Space

- 8,000 SF Former LTL Building
- Can be converted
- 40 Tractor Trailer parking spaces
- Public Utilities
- Confirm availability timing

## Location

- Northampton County
- East Allen Township
- 6 Miles from LVIA Airport
- 3 Miles north of Route 22 on RT 512

## Additional Space

Additional parking possible at extra fee

## Lease Rate

Call For Details

## For more information, please contact

**Chip Miers**

610.295.6604

cmiers@MarkwardGroup.com

**Ann Kline**

610.295.6602

akline@MarkwardGroup.com

**Del Markward, SIOR**

dmarkward@MarkwardGroup.com

## Markward Group

5925 Tilghman Street, Suite 900

Allentown, PA 18104

p: 610.295.6600

f: 610.295.6601

MarkwardGroup.com



The foregoing information was furnished to us by sources which we deem to be reliable, but no warranty or representation is made as to the accuracy thereof. Subject to correction of errors, omissions, change of price, prior sale or withdrawal from market without notice.



Commercial, Industrial & Retail Real Estate

**FOR LEASE | INDUSTRIAL**

**7661 - 7671 BETH BATH PIKE | BATH, PA**



**For more information, please contact**

**Chip Miers**

610.295.6604

cmiers@Markwardgroup.com

**Ann Kline**

610.295.6602

akline@MarkwardGroup.com

**Del Markward, SIOR**

dmarkward@MarkwardGroup.com

**Markward Group**

5925 Tilghman Street, Suite 900

Allentown, PA 18104

p: 610.295.6600

f: 610.295.6601

MarkwardGroup.com



The foregoing information was furnished to us by sources which we deem to be reliable, but no warranty or representation is made as to the accuracy thereof. Subject to correction of errors, omissions, change of price, prior sale or withdrawal from market without notice.



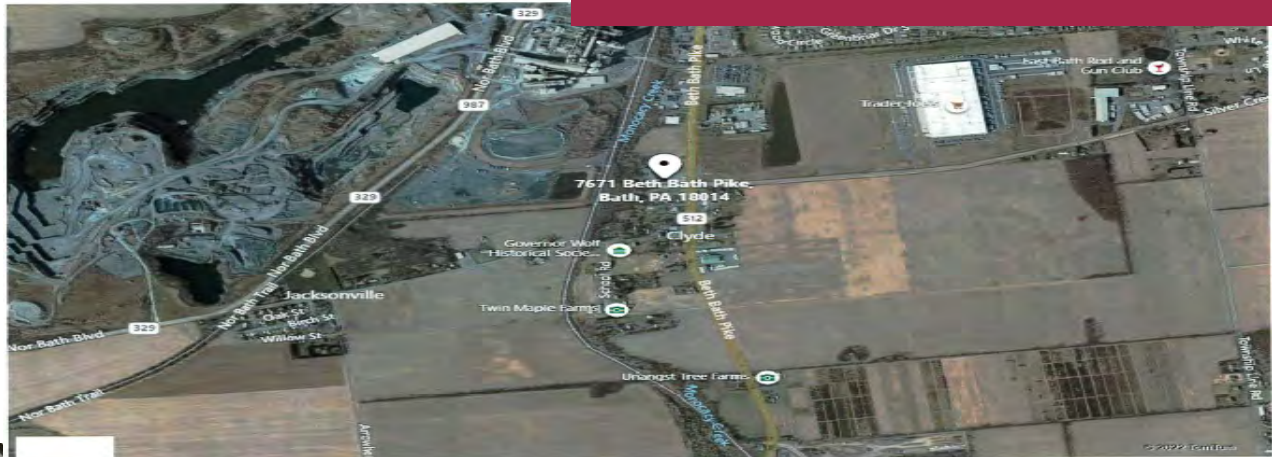


**MARKWARD  
GROUP**

Commercial, Industrial & Retail Real Estate

**FOR LEASE | INDUSTRIAL**

**7661 - 7671 BETH BATH PIKE | BATH, PA**



**For more information, please contact**

**Chip Miers**

610.295.6604

cmiers@Markwardgroup.com

**Ann Kline**

610.295.6602

akline@MarkwardGroup.com

**Del Markward, SIOR**

dmarkward@MarkwardGroup.com

**Markward Group**

5925 Tilghman Street, Suite 900

Allentown, PA 18104

p: 610.295.6600

f: 610.295.6601

MarkwardGroup.com



The foregoing information was furnished to us by sources which we deem to be reliable, but no warranty or representation is made as to the accuracy thereof. Subject to correction of errors, omissions, change of price, prior sale or withdrawal from market without notice.