



# MARKWARD GROUP

Commercial, Industrial & Retail Real Estate

FOR LEASE | OFFICE

435 Allentown Drive | Allentown, PA 18109



## 4,116 SF Ready to Occupy Office Space

### Key Features

- Adaptable existing layout
- Private Entrance
- Ready to Occupy
- Ample on site Parking
- Immediate Availability
- 10 foot clear ceiling height
- PPL electric and public water and sewer

### Location

Lehigh County: Near Airport Road, American Parkway,  
Route 22, LVIA and Coca Cola Park

### Zoning

I-2 Limited Industrial

### Lease Rate

Asking: \$12.95 NNN

### For more information, please contact

**Chip Miers**

610.295.6003

cmiers@MarkwardGroup.com

**Ann Kline**

610.295.6602

akline@MarkwardGroup.com

**Del Markward, SIOR**

610.295.6603

dmarkward@MarkwardGroup.com

**Markward Group**

5925 Tilghman Street, Suite 900

Allentown, PA 18104

p: 610.295.6600

f: 610.295.6601

MarkwardGroup.com



The foregoing information was furnished to us by sources which we deem to be reliable, but no warranty or representation is made as to the accuracy thereof. Subject to correction of errors, omissions, change of price, prior sale or withdrawal from market without notice.

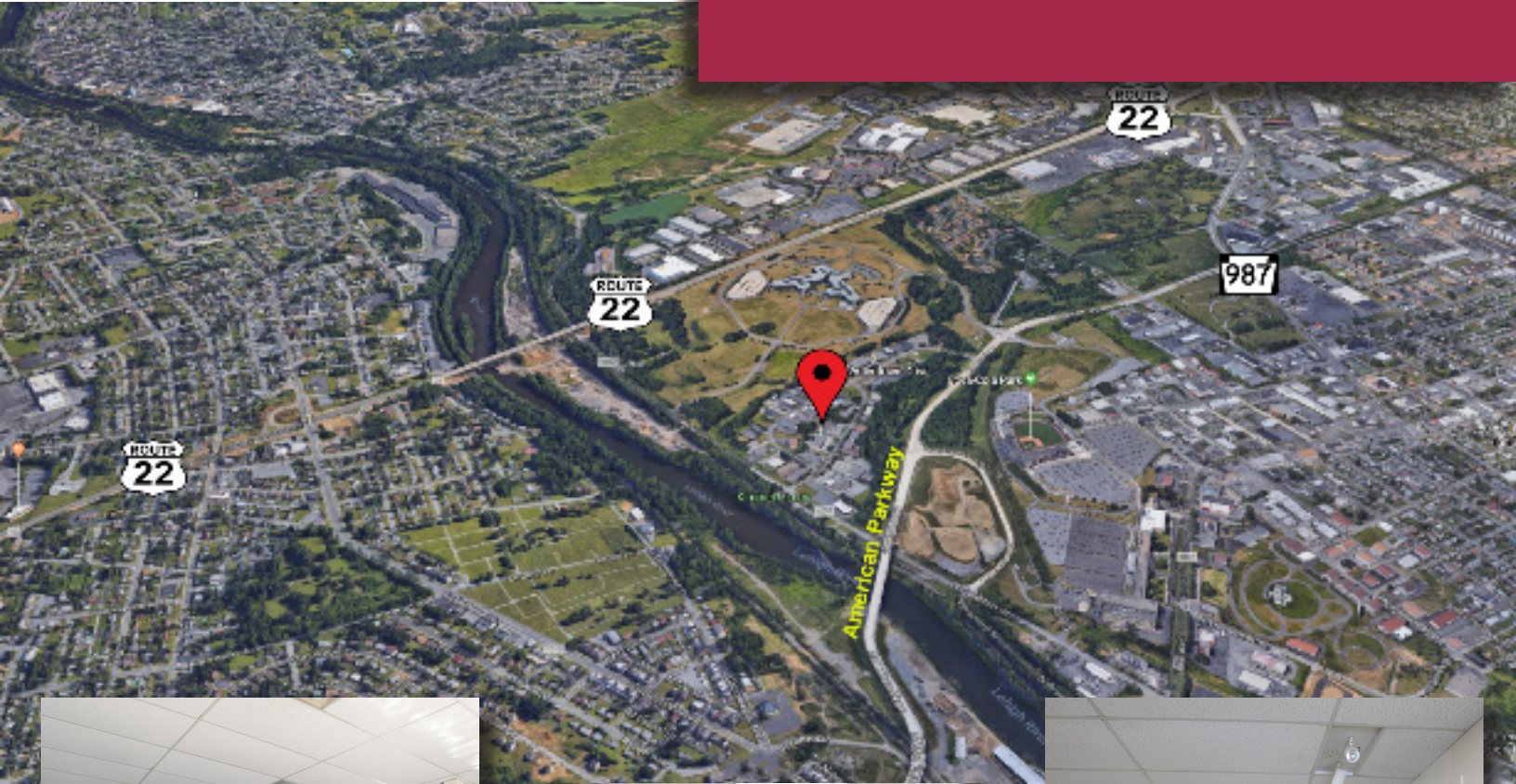


# MARKWARD GROUP

Commercial, Industrial & Retail Real Estate

FOR LEASE | OFFICE

435 Allentown Drive | Allentown, PA 18109



## For more information, please contact

**Chip Miers**

610.295.6003

[cmiers@MarkwardGroup.com](mailto:cmiers@MarkwardGroup.com)

**Ann Kline**

610.295.6602

[akline@MarkwardGroup.com](mailto:akline@MarkwardGroup.com)

**Del Markward, SIOR**

610.295.6603

[dmarkward@MarkwardGroup.com](mailto:dmarkward@MarkwardGroup.com)

**Markward Group**

5925 Tilghman Street, Suite 900

Allentown, PA 18104

p: 610.295.6600

f: 610.295.6601

[MarkwardGroup.com](http://MarkwardGroup.com)

The foregoing information was furnished to us by sources which we deem to be reliable, but no warranty or representation is made as to the accuracy thereof. Subject to correction of errors, omissions, change of price, prior sale or withdrawal from market without notice.

